


Hellenbrand



SharkBite[®]
Connection System

Hellenbrand, Inc.
404 Moravian Valley Road
Waunakee, Wisconsin 53597
Phone: 608-849-3050 • Fax: 608-849-7398
www.hellenbrand.com

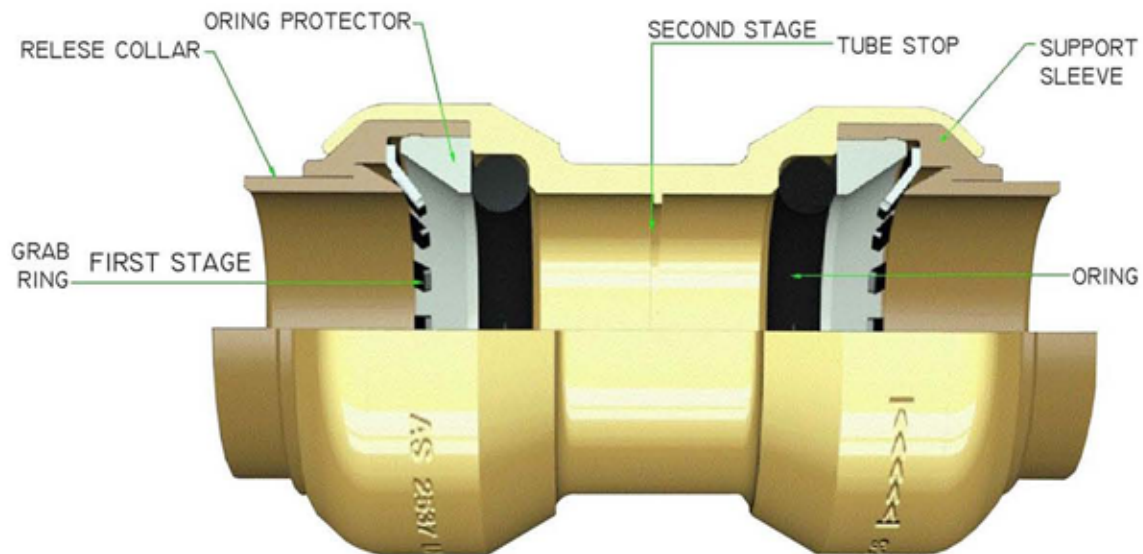
Installation Instructions

SharkBite® Connection System

The SharkBite® System

The SharkBite® connection system uses an advanced push-fit design that works in two stages. When the tube is inserted into the fitting it passes the first stage through a release collar and then through a stainless steel grab ring. The grab ring has teeth that open out and grip onto the tube.

At the second stage the tube is pushed through an o-ring protector which aligns the tube. A specially formulated o-ring is then compressed between the wall of the fitting and the tube before the end of the tube reaches the tube stop.



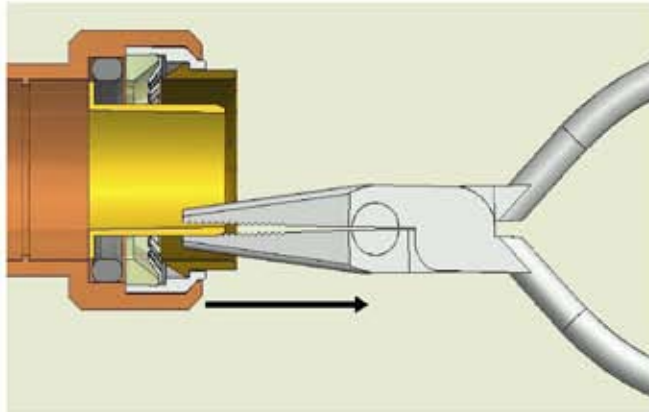
Only when the tube has passed through the o-ring and reached the tube stop, is a secure joint created.

The SharkBite® fittings can only be used with pipe/tubing certified to the following specifications:

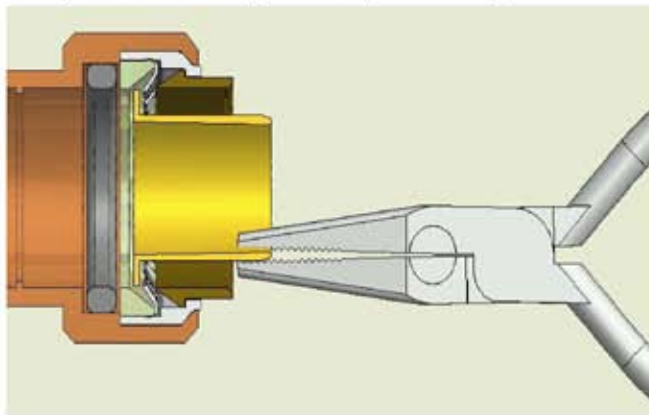
- **PEX** (ASTM F876, CSA B137.5)
- **Copper** (ASTM B 88)
- **CPVC** (ASTM D 2846, CSA B137.6)

The SharkBite® fittings have an integral Tube Support Liner that is effective in supporting PEX tubing to ensure the o-ring seals correctly on the outside of the PEX tubing. The Tube Support Liner is not required for use with CPVC and copper tubing; however these two types of tubing fit over the Tube Support Liner easily and hold it against the tube stop.

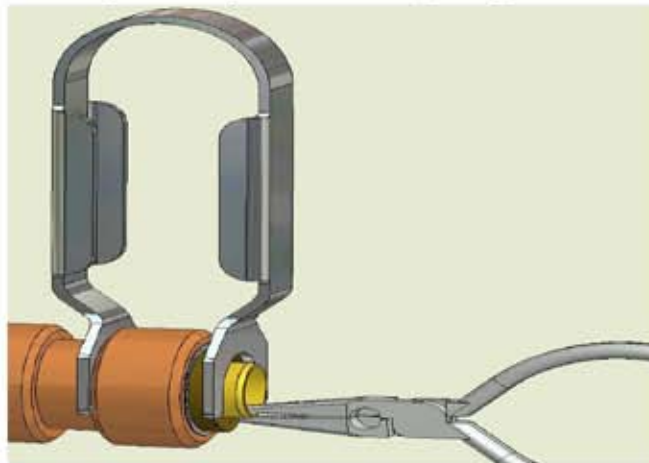
The tube liner can be easily removed by pulling it past the o-ring, then with the aid of the SharkBite® disassembly clip or fork tool (both sold separately), the Tube Support Liner can drop out of the fitting as it can move freely past the grab ring. Needle nosed pliers may be used to pull the Tube Support Liner out.



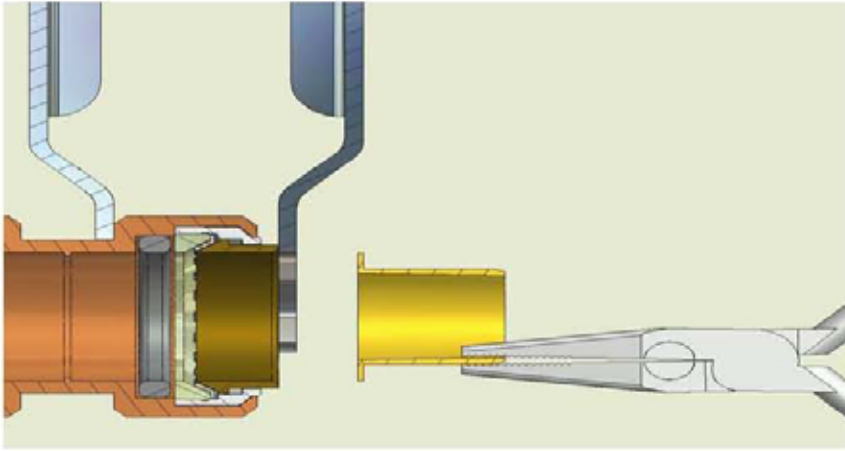
Gently work the Tube Support Liner past the o-ring



Stop once the Tube Support Liner has been pulled past the o-ring, the Tube Support Liner cannot be pulled out any further due to the grab ring.



Put the disassembly tongs (or clip) in place and squeeze them together. This will cause the grab ring teeth to spread



Once the disassembly tongs are squeezed and the grab ring teeth are spread, the Tube Support Liner can be easily removed

Connecting a SharkBite® Joint

The following instructions must be followed to assemble the SharkBite Connection System. Ensure all fitting installations comply with local plumbing and building codes.

Preparation

Select the correct size fitting and tubing for the job. Check that fittings and tubing are clean, in good condition and are free from damage and foreign objects.

Cut the tube so that the ends are square. Ensure that there are no burrs or damage to the cut end. Wherever possible proper tube cutting tools such as rotary tube cutters (copper tubing) or tube shears (for plastic tubing) should be used.

Once the tubing end is cut square and clean, use the SharkBite® Depth Gauge (sold separately) and a scribe to mark the insert depth on the outside of the tubing. This mark is used to ensure that the joint is assembled correctly. To assemble correctly, the tubing needs to be pushed into the fitting until it meets the tube stop.

Follow the following three steps to insert the tubing into the fitting.

1. Insert the tube through the release collar to rest against the grab ring.
2. Push the tube firmly with a slight twisting action until it reaches the tube stop.
3. To ensure that the tube is correctly inserted, check that the depth mark is within 0.05 in (1.3 mm) of the end of the release collar.

Note: Some materials, such as concrete can corrode brass. If the SharkBite fittings are to be buried in concrete, cover the fitting to prevent contact with the cement. Chloride-free tape or tightly wrapped and sealed insulation works well. (Check with local codes to verify this is acceptable).

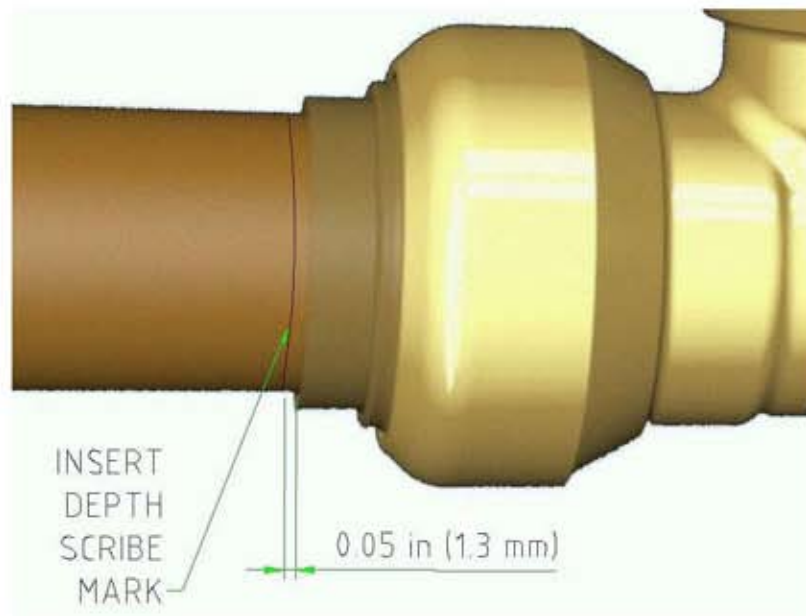




Insert the tube through the release collar to rest against the grab ring.



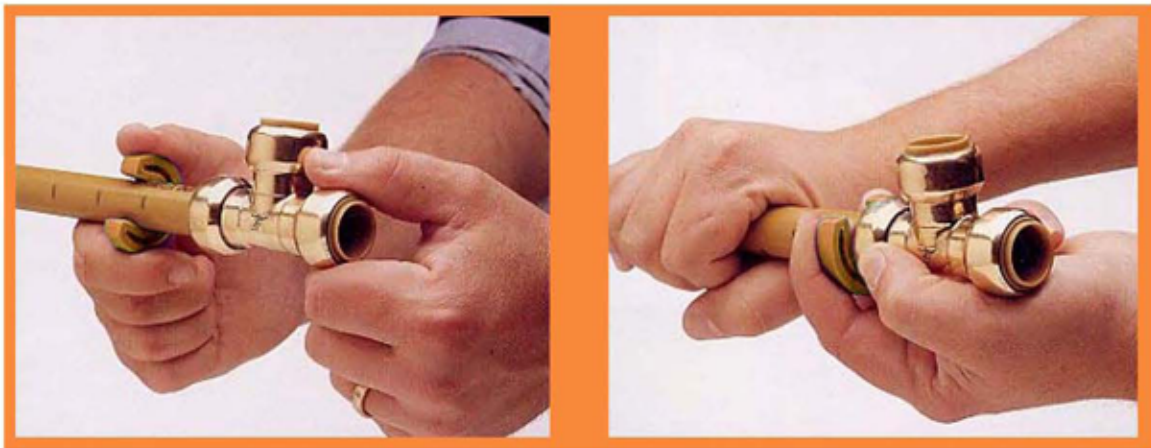
Push the tube firmly with a twisting action until it reaches the next Safe Seal Indicator Mark.



Disconnecting a Joint

Disconnection of the joint can only occur by using either the SharkBite® disassembly clip or the SharkBite® disconnecting fork tool. By applying pressure to the release collar with the clip or the fork tool, the grab ring teeth are splayed. This action releases the tube, allowing it to be removed from the fitting.

1. Place the SharkBite® disassembly clip around the tube with the non-branded face against the release collar. If using the SharkBite fork tool, place the forks around the fitting assembly. The fork end with the SharkBite brand logo should be positioned around the tube and the other end around the neck of the fitting.
2. Push the clip against the release collar and pull the tube with a twisting action to release the tube. If using the SharkBite® fork tool, squeeze the tool with one hand and pull the tube with a twisting action to release the tube.
3. Check the fitting and tube end for damage. The fitting should be free of damage and foreign objects. The tubing should be free of damage and marks on the outside diameter. If the tubing is damaged or marked, then cut and use a new section of tubing.



Proposition 65 Warning: This product contains chemicals known to the State of California to cause cancer or birth defects or other reproductive harm.
Notice to Installer/Contractor: California law requires this notice be provided to the consumer/end user of this product